

Official Boxscore \*\*\* FINAL \*\*\*

Date: 03-20-93 Site:BOYS STATE TOURNEY GM 13

VISITORS (Last Name, First)

NO.	NAME	Tot FG		3-POINT		FT	FTA	Rebounds			PF	TP	A	TO	BLK	S	TIME	
		FG	FGA	FG	FGA			OFF	DEF	TOT								
	PAUL DUNBAR																	
21	MILLS, CAMERON	5	10	1	2	2	3	0	4	4	3	13	2	2	3	1	25:41	
40	BURTON, DARNELL	5	16	0	1	0	1	1	4	5	3	10	2	7	1	3	30:25	
05	BYARS, TRAVIS	7	10	0	0	0	1	3	9	12	3	14	0	1	2	0	26:51	
12	STEWART, TIM	6	10	1	2	3	3	0	3	3	2	16	3	6	0	0	32:00	
23	TRAVIS, LUMIE	2	4	0	0	0	0	2	3	5	3	4	1	1	0	2	21:25	
10	BLACK, TROY	1	3	0	1	0	0	0	1	1	0	2	3	1	0	0	10:35	
20	HUGUELY, Y.	2	3	0	1	0	0	1	1	2	1	4	1	1	1	1	7:54	
13	HORN, BRAD	1	2	0	0	0	0	2	0	2	1	2	0	0	1	0	5:09	
TEAM REBOUNDS (INCLUDED IN TOTALS)																		
TOTALS		29	58	2	7	5	8	9	28	37	16	65	12	19	8	7	160	
TOTAL FG 1st HALF 8/17		47.1%		2nd HALF 21/41		51.2% GAME		29/58		50.0%		DEADBALL						
3-POINT FG 1st HALF 1/3		33.3%		2nd HALF 1/4		25.0% GAME		2/7		28.6%		REBOUNDS		1				
FREE THROWS 1st HALF 1/2		50.0%		2nd HALF 4/6		66.7% GAME		5/8		62.5%								

HOME (Last Name, First)

NO.	NAME	Tot FG		3-POINT		FT	FTA	Rebounds			PF	TP	A	TO	BLK	S	TIME	
		FG	FGA	FG	FGA			OFF	DEF	TOT								
	PLEASURE RIDGE PARK																	
30	MACKLIN, DANYELL	5	16	0	4	3	4	5	11	16	3	13	2	1	3	3	29:03	
34	CINVILLE, MATT	2	7	0	0	2	2	4	2	6	1	6	4	2	0	1	28:45	
12	STANDARD, D.	1	9	0	5	4	6	3	3	6	4	6	3	3	0	2	27:27	
21	TAYLOR, CHARLIE	5	11	2	6	0	1	0	3	3	3	12	4	3	0	0	28:25	
24	KELLY, RAMONE	8	15	1	4	2	2	1	3	4	2	19	0	6	0	1	23:57	
25	WELLS, STEVE	2	6	1	2	1	2	2	0	2	2	6	0	1	0	4	17:10	
33	ALEXANDER, CRAIG	0	5	0	0	0	0	2	0	2	0	0	0	0	0	1	5:13	
TEAM REBOUNDS (INCLUDED IN TOTALS)																		
TOTALS		23	69	4	21	12	17	20	23	43	15	62	13	16	3	12	160	
TOTAL FG 1st HALF 8/18		44.4%		2nd HALF 15/51		29.4% GAME		23/69		33.3%		DEADBALL						
3-POINT FG 1st HALF 1/5		20.0%		2nd HALF 3/16		18.8% GAME		4/21		19.0%		Rebounds		2				
FREE THROWS 1st HALF 2/5		40.0%		2nd HALF 10/12		83.3% GAME		12/17		70.6%								

OFFICIALS: YVON ALLEN, LYMAN BROWN, ALT-R. SPALDING

Technical: None

SCORE BY PERIODS

PAUL DUNBAR	18	16	19	12	=	65
PLEASURE RIDGE PARK	19	15	14	14	=	62

Attendance: 16,625

COMMENTS: POINTS OFF TURNOVERS

SECOND CHANCE POINTS

PAUL DUNBAR 12 PLEASURE RIDGE PARK 17 PAUL DUNBAR 8 PLEASURE RIDGE PARK 16

Produced by the KHSAA Sweet Sixteen Stat Crew with FINAL III - a Product of LEXICON SPORTS™

PAUL DUNBAR "BULLDOGS" vs PLEASURE RIDGE PARK "PANTHERS"  
1st Half Play by Play

Player	Team	PLEASURE RIDGE PARK		
MACKLIN,DANYELL,LINVILLE,		MATT ,STANDARD, D.,TAYLOR, CHARLIE,KELLY, RAMONE		Ball to PANTHERS
1-2	50.0%	1-2	50.0%	Driving Layup by MACKLIN,DANYELL
1		1		Assist by TAYLOR, CHARLIE
1-1	100%	2-3	66.6%	3 pt 20 ft Circle Jump shot by KELLY, RAMONE
2		2		Assist by TAYLOR, CHARLIE
2-4	50.0%	3-6	50.0%	6 ft Left Side Bank by MACKLIN,DANYELL
1		3		Assist by STANDARD, D.
1		1		Foul on STANDARD, D.
2-2	100%	4-7	57.1%	Driving Layup by KELLY, RAMONE
1		4		Assist by LINVILLE, MATT
1-1	100%	5-8	62.5%	Layup Off Fast Break by TAYLOR, CHARLIE
2-3	66.6%	6-11	54.5%	6 ft Lane Driving by TAYLOR, CHARLIE
0-1	00.0%	0-1	00.0%	TAYLOR, CHARLIE, 1 Free Throw missed
3-3	100%	7-12	58.3%	Driving Layup by KELLY, RAMONE
3		5		Assist by TAYLOR, CHARLIE
1		2		Foul on KELLY, RAMONE
				Sub In: WELLS, STEVE Out: TAYLOR, CHARLIE
1-2	50.0%	1-3	33.3%	Sub In: ALEXANDER,CRAIG Out: KELLY, RAMONE
				STANDARD, D., 2 Free Throws made 1st missed 2nd
				Sub In: TAYLOR, CHARLIE Out: STANDARD, D.
				Sub In: ASHFORD, GOLDI Out: MACKLIN,DANYELL
4-5	80.0%	8-16	50.0%	7 ft Lane Bank by KELLY, RAMONE
2		3		Foul on KELLY, RAMONE
				Sub In: MACKLIN,DANYELL Out: LINVILLE, MATT
				Sub In: STANDARD, D. Out: KELLY, RAMONE
1-2	50.0%	2-5	40.0%	WELLS, STEVE, 2 Free Throws made 1st missed 2nd
1		4		Foul on MACKLIN,DANYELL

PAGE : 1

Tip off at 10:00 a.m. on 03/20/93 at BOYS STATE TOURNEY GM 13  
Produced by the KHSAA Sweet Sixteen Stat Crew with FINAL III - a Product of LEXIC

Time	Score	PAUL DUNBAR	Player	Team
		MILLS, CAMERON ,BURTON, DARNELL,BYARS, TRAVIS,STEWART, TIM,TRAVIS, LUMIE		
1 7:46	0-2*	4 ft Lane Bank by MILLS, CAMERON	1-1	100% 1-1 100%
		Assist by TRAVIS, LUMIE	1	1
1 7:33	*2-2			
1 7:09	*5-2			
1 6:50	5-4*	8 ft Right Side Follow by BYARS, TRAVIS	1-1	100% 2-4 50.0%
1 6:04		Foul on STEWART, TIM	1	1
1 5:54	*7-4			
1 5:50	7-6*	Layup Off Fast Break by STEWART, TIM	1-2	50.0% 3-6 50.0%
1 5:49				
1 5:49	7-7*	STEWART, TIM, 1 Free Throw made	1-1	100% 1-1 100%
1 5:41	*9-7			
1 5:26	*11-7			
1 5:18	11-10*	3 pt 22 ft Right Side Jump shot by MILLS, CAMERON	2-2	100% 4-7 57.1%
		Assist by STEWART, TIM	1	2
1 4:47	11-12*	4 ft Lane Follow by BYARS, TRAVIS	2-2	100% 5-9 55.5%
1 4:12	*13-12			
1 4:12		Foul on MILLS, CAMERON	1	2
1 4:12				
1 4:09	*15-12			
1 3:29				
1 3:29				
1 2:58		Foul on TRAVIS, LUMIE	1	3
1 2:58				
1 2:58	*16-12			
1 2:35				
1 2:35				
1 2:35		Sub In: BLACK, TROY Out:		
1 2:15	16-14*	6 ft Lane Driving by MILLS, CAMERON	3-3	100% 6-13 46.1%
		Assist by STEWART, TIM	2	3
1 2:06	*18-14			
1 1:54	18-16*	Driving Layup by BYARS, TRAVIS	3-3	100% 7-14 50.0%
		Assist by BLACK, TROY	1	4
1 1:53				
1 1:53				
1 1:53				
1 1:53		BYARS, TRAVIS, 1 Free Throw missed	0-1	00.0% 1-2 50.0%
1 1:35		Foul on BYARS, TRAVIS	1	4
1 1:35				
1 1:35	*19-16			
1 1:05				
1 0:39	19-18*	6 ft Lane Jump shot by BURTON, DARNELL	1-5	20.0% 8-17 47.0%
1 0:04		Foul on MILLS, CAMERON	2	5

PAUL DUNBAR "BULLDOGS" vs PLEASURE RIDGE PARK "PANTHERS"  
1st Half Play by Play

Player	Team	PLEASURE RIDGE PARK
MACKLIN,DANYELL,LINVILLE,		MATT ,STANDARD, D.,TAYLOR, CHARLIE,KELLY, RAMONE Ball to PANTHERS
5-7 71.4% 9-21 42.8%	4 6	8 ft Left Side Jump shot by KELLY, RAMONE Assist by TAYLOR, CHARLIE
6-8 75.0% 10-22 45.4%	1 7	Turnaround Layup by KELLY, RAMONE Assist by MACKLIN,DANYELL
	1 5	Foul on LINVILLE, MATT
3-4 75.0% 11-24 45.8%	2 8	3 pt 23 ft Right Angle Jump shot by TAYLOR, CHARLIE Assist by STANDARD, D.
2-2 100% 4-7 57.1%		MACKLIN,DANYELL, 1 & Bonus made both
4-5 80.0% 12-29 41.3%	2 9	3 pt 23 ft Straight Away Jump shot by TAYLOR, CHARLIE Assist by LINVILLE, MATT
2-2 100% 6-9 66.6%	1 6	Sub In: WELLS, STEVE Out: STANDARD, D. LINVILLE, MATT, 1 & Bonus made both Foul on WELLS, STEVE
3-4 75.0% 7-11 63.6%		Sub In: STANDARD, D. Out: KELLY, RAMONE MACKLIN,DANYELL, 2 Free Throws missed 1st made 2nd
0-1 Tot-1 0-1 Tot-22		Rebound by MACKLIN,DANYELL

PAGE : 2

Tip off at 10:00 a.m. on 03/20/93 at BOYS STATE TOURNEY GM 13  
Produced by the KHSAA Sweet Sixteen Stat Crew with FINAL III - a Product of LEXIC

Time	Score	PAUL DUNBAR	Player	Team
		BLACK, TROY,STEWART, TIM,MILLS, CAMERON ,BURTON, DARNELL,BYARS, TRAVIS		
2 7:06	*21-18			
2 6:52	21-20*	4 ft Lane Driving by MILLS, CAMERON	4-5	80.0% 9-19 47.3%
2 6:41	*23-20			
2 6:31	23-22*	4 ft Lane Jump shot by MILLS, CAMERON	5-6	83.3% 10-20 50.0%
2 6:19		Sub In: HUGUELY, T. Out: MILLS, CAMERON		
2 6:09			1	6
2 5:58		Foul on BURTON, DARNELL		
2 5:57	*26-22			
2 5:29	26-24*	14 ft Right Side Jump shot by HUGUELY, T. Assist by BLACK, TROY	1-1	100% 11-21 52.3%
2 5:09		Foul on BYARS, TRAVIS	2	5
2 5:09		Sub In: HORN, BRAD Out: BYARS, TRAVIS	2	7
2 5:09	*28-24			
2 4:31	28-26*	Driving Reverse Lay Up by STEWART, TIM	2-4	50.0% 12-22 54.5%
2 4:16	*31-26			
2 4:03	31-28*	Driving Dunk by BURTON, DARNELL Assist by HUGUELY, T.	2-7	28.5% 13-23 56.5%
2 3:23		Foul on HORN, BRAD	1	6
2 3:23			1	8
2 3:23	*33-28			
2 3:08				
2 1:50	33-30*	13 ft Right Side Jump shot by HUGUELY, T. Assist by BLACK, TROY	2-2	100% 14-27 51.8%
2 1:39		Foul on HUGUELY, T.	3	7
2 1:39			1	9
2 1:39	*34-30			
2 1:30	34-32*	6 ft Lane Driving by BLACK, TROY	1-3	33.3% 15-28 53.5%
2 0:24	34-34*	4 ft Lane Follow by HORN, BRAD	1-1	100% 16-30 53.3%
2 0:00		Rebound by HORN, BRAD	0-1	Tot-1 0-1 Tot-18
2 0:00		4 ft Lane Follow by HORN, BRAD, missed	1-2	50.0% 16-32 50.0%
2 0:00				

Official Boxscore \* OFFICIAL FIRST HALF \*

Date: 03-20-93 Site:BOYS STATE TOURNEY GM 13

VISITORS (Last Name, First)

NO.	NAME	Tot FG		3-POINT		FT	FTA	Rebounds			PF	TP	A	TO	BLK	S	TIME
		FG	FGA	FG	FGA			OFF	DEF	TOT							
21	PAUL DUNBAR	5	6	1	2	0	0	0	1	1	2	11	0	2	0	0	9:41
40	MILLS, CAMERON	2	9	0	1	0	0	1	1	2	1	4	0	3	0	1	16:00
05	BURTON, DARNELL	3	4	0	0	0	1	2	4	6	2	6	0	0	0	0	10:51
12	BYARS, TRAVIS	2	5	0	1	1	1	0	1	1	1	5	2	4	0	0	16:00
23	STEWART, TIM	0	1	0	0	0	0	0	2	2	1	0	1	0	0	0	8:00
10	TRAVIS, LUMIE	1	3	0	1	0	0	0	1	1	0	2	3	1	0	0	10:35
20	BLACK, TROY	2	2	0	0	0	0	0	1	1	1	4	1	0	1	1	6:19
13	HUGUELY, T.	1	2	0	0	0	0	2	0	2	1	2	0	0	1	0	5:09
HORN, BRAD		1	2	0	0	0	0	2	0	2	1	2	0	0	1	0	
TEAM REBOUNDS (INCLUDED IN TOTALS)																	
TOTALS		16	32	1	5	1	2	5	13	18	9	34	7	10	2	2	80

TOTAL FG 1st HALF 8/17 47.1% 2nd HALF 8/15 53.3% GAME 16/32 50.0% DEADBALL  
 3-POINT FG 1st HALF 1/3 33.3% 2nd HALF 0/2 0.0% GAME 1/5 20.0% REBOUNDS 1  
 FREE THROWS 1st HALF 1/2 50.0% 2nd HALF 0/0 0.0% GAME 1/2 50.0%

HOME (Last Name, First)

NO.	NAME	Tot FG		3-POINT		FT	FTA	Rebounds			PF	TP	A	TO	BLK	S	TIME
		FG	FGA	FG	FGA			OFF	DEF	TOT							
30	PLEASURE RIDGE PARK	2	9	0	2	3	4	3	4	7	1	7	1	0	2	1	15:18
34	MACKLIN, DANYELL	0	2	0	0	2	2	2	1	3	1	2	2	1	0	1	14:07
12	LINVILLE, MATT	0	5	0	3	1	2	2	3	5	0	1	1	1	0	1	13:34
21	STANDARD, D.	4	6	2	3	0	1	0	2	2	7	10	4	2	0	0	15:06
24	TAYLOR, CHARLIE	6	8	1	2	0	0	0	2	2	2	13	0	5	0	1	11:23
25	KELLY, RAMONE	0	2	0	0	1	2	1	0	1	1	1	0	1	0	2	6:52
33	WELLS, STEVE	0	1	0	0	0	0	0	0	0	0	0	0	0	0	0	2:58
23	ALEXANDER, CRAIG	0	0	0	0	0	0	0	0	0	0	0	0	0	0	0	2:35
ASHFORD, GOLDIE		0	0	0	0	0	0	0	0	0	0	0	0	0	0	0	
TEAM REBOUNDS (INCLUDED IN TOTALS)																	
TOTALS		12	33	3	10	7	11	10	12	22	6	34	9	10	2	6	80

TOTAL FG 1st HALF 8/18 44.4% 2nd HALF 4/15 26.7% GAME 12/33 36.4% DEADBALL  
 3-POINT FG 1st HALF 1/5 20.0% 2nd HALF 2/5 40.0% GAME 3/10 30.0% REBOUNDS 1  
 FREE THROWS 1st HALF 2/5 40.0% 2nd HALF 5/6 83.3% GAME 7/11 63.6%

OFFICIALS: YVON ALLEN, LYMAN BROWN, ALT-R. SPALDING

Technical: None

SCORE BY PERIODS

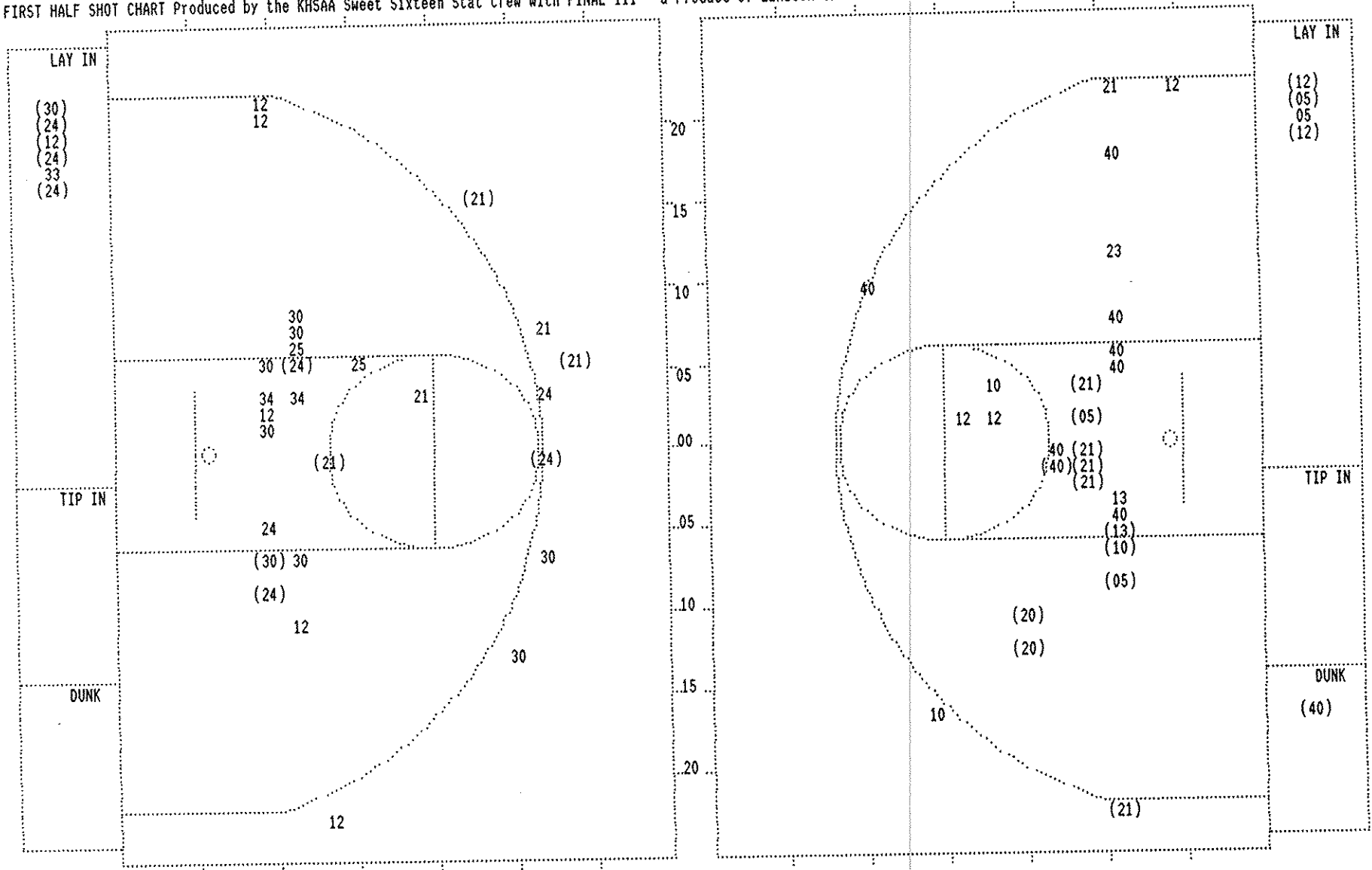
PAUL DUNBAR 18 16 = 34  
 PLEASURE RIDGE PARK 19 15 = 34

Attendance:

COMMENTS: POINTS OFF TURNOVERS SECOND CHANCE POINTS  
 PAUL DUNBAR 4 PLEASURE RIDGE PARK 6 PAUL DUNBAR 6 PLEASURE RIDGE PARK 6

Produced by the KHSAA Sweet Sixteen Stat Crew with FINAL III - a Product of LEXICON SPORTS

FIRST HALF SHOT CHART Produced by the KHSAA Sweet Sixteen Stat Crew with FINAL III - a Product of LEXICON SPORTS™



PLEASURE RIDGE PARK					
Player			Player		
30 - MACKLIN, DA	2 / 9	22.2%	25 - WELLS, STE	0 / 2	0.0%
34 - LINVILLE,	0 / 2	0.0%	33 - ALEXANDER,	0 / 1	0.0%
12 - STANDARD,	1 / 6	16.6%			
21 - TAYLOR, CH	3 / 5	60.0%			
24 - KELLY, RAM	6 / 8	75.0%			
Layups	1-9 Ft	10-15 Ft	Over 15 Ft	3 Pointers	Total
5 / 6	4 / 14	0 / 3	3 / 10	12 / 33	
83.3%	28.6%	0.0%	30.0%	36.4%	

PAUL DUNBAR					
Player			Player		
21 - MILLS, CAM	5 / 6	83.3%	10 - BLACK, TRO	1 / 3	33.3%
40 - BURTON, DA	2 / 9	22.2%	13 - HORN, BRAD	1 / 2	50.0%
05 - BYARS, TRA	3 / 4	75.0%	20 - HUGUELY, T	2 / 2	100.0%
12 - STEWART, T	2 / 5	40.0%			
23 - TRAVIS, LU	0 / 1	0.0%			
Layups	1-9 Ft	10-15 Ft	Over 15 Ft	3 Pointers	Total
4 / 5	9 / 15	2 / 6	0 / 1	1 / 5	16 / 32
80.0%	60.0%	33.3%	0.0%	20.0%	50.0%

PAUL DUNBAR "BULLDOGS" vs PLEASURE RIDGE PARK "PANTHERS"  
 2nd Half Play by Play

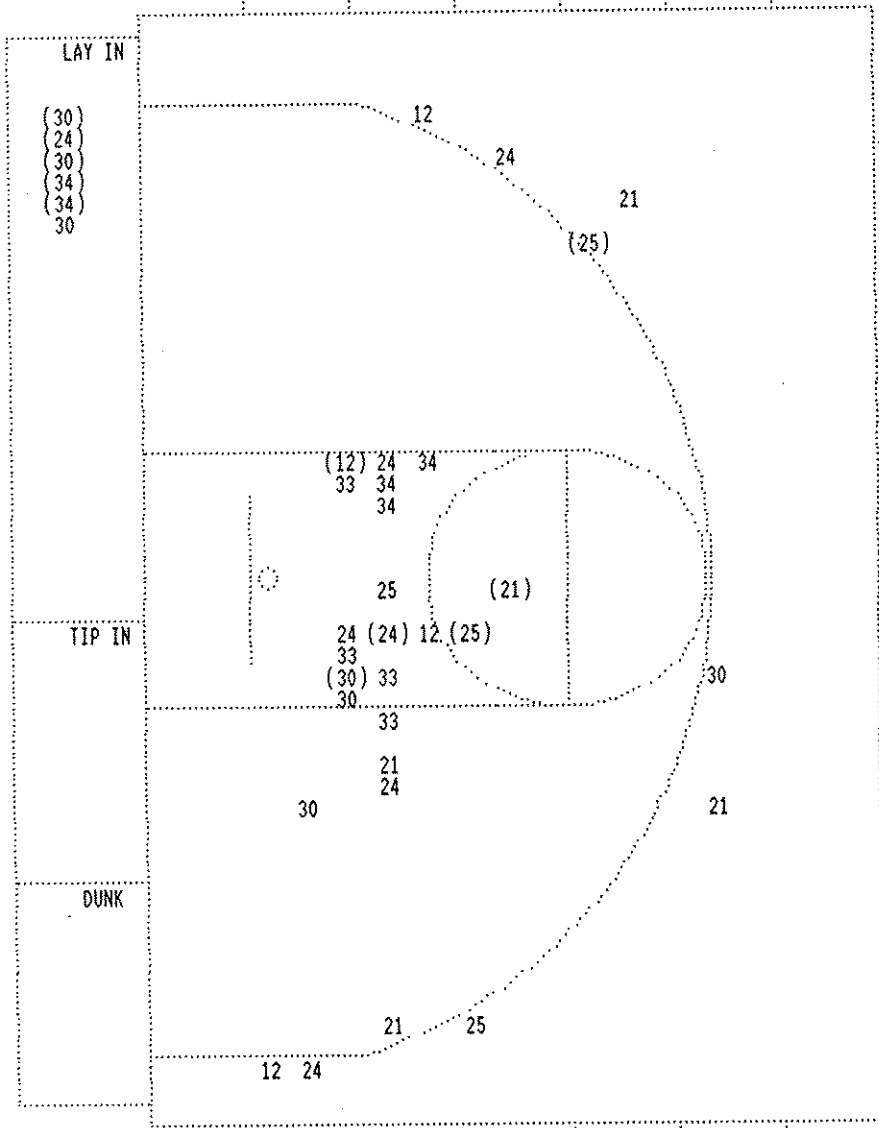
PAGE : 1

Tip off at 10:00 a.m. on 03/20/93 at BOYS STATE TOURNEY GM 13  
 Produced by the KHSAA Sweet Sixteen Stat Crew with FINAL III - a Product of LE

Player	Team	PLEASURE RIDGE PARK	Time	Score	PAUL DUNBAR	Player	Team	
MACKLIN,DANYELL,LINVILLE,		MATT ,STANDARD, D.,TAYLOR, CHARLIE,KELLY, RAMONE			MILLS, CAMERON ,BURTON, DARNELL,BYARS, TRAVIS,STEWART, TIM,TRAVIS, LUMIE			
1-6	16.6%	13-35 37.1%	6 ft Lane Follow by STANDARD, D.	3 7:50	*36-34	3-10	30.0%	17-33 51.5%
				3 7:25	36-36* 14 ft Right Angle Jump shot by BURTON, DARNELL	3-6	50.0%	18-35 51.4%
				3 6:26	36-38* Layup Off Fast Break by STEWART, TIM	1		8
					Assist by MILLS, CAMERON	2		1
				3 6:17	Foul on BURTON, DARNELL			
2-4	50.0%	8-13 61.5%	STANDARD, D., 2 Free Throws missed 1st made 2nd	3 6:17	*37-38	4-5	80.0%	19-36 52.7%
				3 6:08	37-40* Driving Layup by BYARS, TRAVIS	2		9
					Assist by MILLS, CAMERON	4-11	36.3%	20-37 54.0%
				3 5:43	37-42* Layup Off Fast Break by BURTON, DARNELL	1-2	50.0%	21-38 55.2%
				3 5:31	37-44* 8 ft Right Side Jump shot by TRAVIS, LUMIE			
				3 5:27				
					REB: 24 A: 9 BLK: 2 TO: 12 PF: 0			
					S: 6 FT: 8-13 61.5% FG: 13-37 35.1%			
					No. 1 PLEASURE RIDGE PARK T I M E - O U T			
					REB: 20 A: 9 BLK: 3 TO: 10 PF: 1			
					S: 4 FT: 1-2 50.0% FG: 21-38 55.2%			
2	1		Foul on MACKLIN,DANYELL	3 4:58				
			Sub In: ALEXANDER,CRAIG Out: MACKLIN,DANYELL	3 4:58				
				3 4:58	37-46* STEWART, TIM, 2 Free Throws made both	3-3	100%	3-4 75.0%
1	2		Foul on STANDARD, D.	3 4:39				
			Sub In: MACKLIN,DANYELL Out: ALEXANDER,CRAIG	3 3:47	Foul on BURTON, DARNELL	3		2
				3 3:47	Sub In: HUGUELY, T. Out: BURTON, DARNELL			
2-2	100%	10-15 66.6%	KELLY, RAMONE, 2 Free Throws made both	3 3:47	*39-46			
			Sub In: WELLS, STEVE Out: KELLY, RAMONE	3 3:47				
				3 3:47	39-48* Driving Layup by BYARS, TRAVIS	5-7	71.4%	22-42 52.3%
					Assist by STEWART, TIM	3		10
3-11	27.2%	14-44 31.8%	4 ft Lane Bank by MACKLIN,DANYELL	3 3:02	*41-48			
5-8	62.5%	15-45 33.3%	10 ft Lane Jump shot by TAYLOR, CHARLIE	3 2:35	*43-48			
				3 2:29				
					REB: 29 A: 9 BLK: 2 TO: 12 PF: 2			
					S: 6 FT: 10-15 66.6% FG: 15-45 33.3%			
					T I M E - O U T PAUL DUNBAR No. 1			
					REB: 25 A: 10 BLK: 3 TO: 11 PF: 2			
					S: 4 FT: 3-4 75.0% FG: 22-43 51.1%			
				3 2:13	Foul on TRAVIS, LUMIE	2		3
				3 2:12	Sub In: BURTON, DARNELL Out: HUGUELY, T.			
1-3	33.3%	16-46 34.7%	3 pt 21 ft Right Side Jump shot by WELLS, STEVE	3 2:12	*46-48			
3		10	Assist by LINVILLE, MATT					
				3 1:50				
					REB: 29 A: 10 BLK: 2 TO: 12 PF: 2			
					S: 7 FT: 10-15 66.6% FG: 16-46 34.7%			
					T I M E - O U T PAUL DUNBAR No. 2			
					REB: 26 A: 10 BLK: 3 TO: 12 PF: 3			
					S: 4 FT: 3-4 75.0% FG: 22-44 50.0%			
				3 1:25	Foul on BYARS, TRAVIS	3		4
4-12	33.3%	17-48 35.4%	Alley Oop Layup by MACKLIN,DANYELL	3 1:11	*48-48			
4		11	Assist by LINVILLE, MATT					
			Sub In: KELLY, RAMONE Out: STANDARD, D.	3 0:57	48-50* Driving Layup by BYARS, TRAVIS	6-9	66.6%	23-46 50.0%
				3 0:32				
				3 0:00	48-53* 3 pt 34 ft Right Angle Jump shot by STEWART, TIM	4-8	50.0%	24-47 51.0%
					Assist by BURTON, DARNELL	1		11

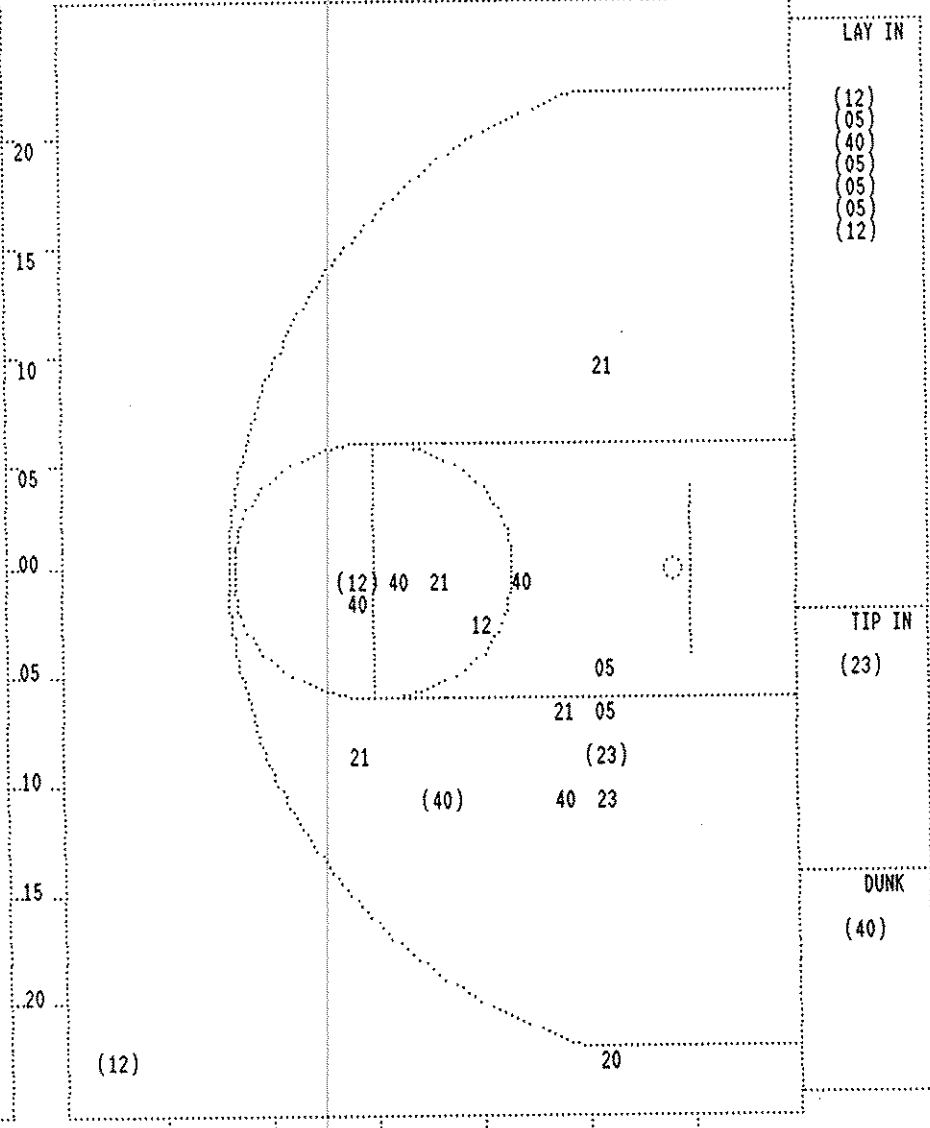
Player	Team	PLEASURE RIDGE PARK	Time	Score	PAUL DUNBAR	Player	Team
KELLY, RAMONE		MACKLIN,DANYELL,LINVILLE, MATT ,TAYLOR, CHARLIE,WELLS, STEVE			MILLS, CAMERON ,BURTON, DARNELL, BYARS, TRAVIS, STEWART, TIM, TRAVIS, LUMIE		
			4 7:29	48-55*	Follow Tip by TRAVIS, LUMIE	2-3	66.6% 25-49 51.0%
7-12	58.3% 18-51 35.2%	Driving Reverse Lay up by KELLY, RAMONE	4 7:18	*50-55		5-14	35.7% 26-50 52.0%
5-15	33.3% 19-54 35.1%	Follow Layup by MACKLIN,DANYELL	4 7:05	50-57*	Dunk Off Fast Break by BURTON, DARNELL		
			4 6:43	*52-57		3	5
			4 6:25		Foul on MILLS, CAMERON		
2-5	40.0% 20-56 35.7%	Sub In: STANDARD, D. Out: KELLY, RAMONE 8 ft Lane Driving by WELLS, STEVE	4 6:25				
	3 3	Foul on MACKLIN,DANYELL	4 6:05	*54-57			
	2 4	Foul on TAYLOR, CHARLIE	4 5:53				
		Sub In: KELLY, RAMONE Out: TAYLOR, CHARLIE	4 5:33				
1-5	20.0% 21-57 36.8%	Driving Layup by LINVILLE, MATT	4 5:32		Foul on STEWART, TIM	2	6
	3 12	Assist by STANDARD, D.	4 5:19				
			4 5:16	*56-57			
2-6	33.3% 22-61 36.0%	Driving Layup by LINVILLE, MATT	4 5:03	56-59*	14 ft Lane Jump shot by STEWART, TIM	5-9	55.5% 27-52 51.9%
	2 13	Assist by MACKLIN,DANYELL	4 3:54	*58-59			
			4 3:39	58-61*	Layup Off Fast Break by BYARS, TRAVIS	7-10	70.0% 28-55 50.9%
					Assist by BURTON, DARNELL	2	12
			4 2:51				
			4 2:51				
0-4	00.0% 22-64 34.3%	Foul on STANDARD, D. Sub In: TAYLOR, CHARLIE Out: WELLS, STEVE	4 2:51			1	6
		Sub In: ALEXANDER, CRAIG Out: MACKLIN,DANYELL	4 1:58		Block by BYARS, TRAVIS		
0-1	Tot-1 0-1	7 ft Left Side Driving by ALEXANDER,CRAIG, missed	4 1:57				
0-5	00.0% 22-65 33.8%	Rebound by ALEXANDER,CRAIG	4 1:55				
		6 ft Lane Follow by ALEXANDER,CRAIG, missed	4 1:55			2	7
			4 1:53		Block by BYARS, TRAVIS	D-1	Tot-1 D-1 Tot-35
			4 1:52		Rebound by STEWART, TIM		
			4 1:47				
	3 6	Foul on TAYLOR, CHARLIE	4 1:47				
		Sub In: MACKLIN,DANYELL Out: ALEXANDER,CRAIG	4 1:47				
		Sub In: WELLS, STEVE Out: LINVILLE, MATT	4 1:47		14 ft Lane Jump shot by BURTON, DARNELL, missed	5-15	33.3% 28-56 50.0%
D-1	Tot-1 D-1	Rebound by TAYLOR, CHARLIE	4 1:47				
1-9	11.1% 22-66 33.3%	3 pt 23 ft Right Side Jump shot by STANDARD, D., missed	4 1:31				
			4 1:25				
			4 1:25		Block by MILLS, CAMERON	1	8
			4 1:25				
0-1	Tot-1 0-2	Rebound by TEAM	4 1:17	*60-61			
8-15	53.3% 23-67 34.3%	4 ft Lane Jump shot by KELLY, RAMONE, made	4 1:11	60-63*	Driving Layup by STEWART, TIM, made	6-10	60.0% 29-57 50.8%
5-11	45.4% 23-68 33.8%	3 pt 22 ft Left Angle Jump shot by TAYLOR, CHARLIE, missed	4 1:00			D-1	Tot-1 D-2 Tot-36
			4 0:58		Rebound by MILLS, CAMERON		
			4 0:56				
		REB: 40 A: 13 BLK: 3 TO: 14 PF: 6					
		S: 12 FT: 10-15 66.6% FG: 23-68 33.8%					
		No. 2 PLEASURE RIDGE PARK T I M E - O U T					
			4 0:49		6 ft Lane Driving by BURTON, DARNELL, missed	5-16	31.2% 29-58 50.0%
D-1	Tot-2 D-2	Rebound by MACKLIN,DANYELL	4 0:47				
			4 0:41		Foul on TRAVIS, LUMIE	3	7
			4 0:41				
			4 0:41				
		REB: 41 A: 13 BLK: 3 TO: 14 PF: 6					
		S: 12 FT: 10-15 66.6% FG: 23-68 33.8%					
		T I M E - O U T PAUL DUNBAR No. 3					
			4 0:41	*62-63			
4-6	66.6% 12-17 70.5%	STANDARD, D., 1 & Bonus made both	4 0:33			0-1	00.0% 3-5 60.0%
	2 7	Foul on WELLS, STEVE	4 0:33		MILLS, CAMERON , 1 & Bonus missed 1st		
D-2	Tot-3 D-3	Rebound by MACKLIN,DANYELL	4 0:33				
			4 0:25				
		REB: 42 A: 13 BLK: 3 TO: 14 PF: 7					
		S: 12 FT: 12-17 70.5% FG: 23-68 33.8%					
		No. 3 PLEASURE RIDGE PARK T I M E - O U T					
			4 0:25				
		Sub In: LINVILLE, MATT Out: WELLS, STEVE	4 0:11		Steal by BURTON, DARNELL	1	6
			4 0:11				
	3 15	Forced Turnover STANDARD, D.	4 0:11				
	3 8	Foul on STANDARD, D.	4 0:10		BURTON, DARNELL, 1 & Bonus missed 1st	0-1	00.0% 3-6 50.0%
D-3	Tot-4 D-4	Rebound by MACKLIN,DANYELL	4 0:10				
			4 0:07		Steal by MILLS, CAMERON	1	7
			4 0:05				
	1 16	Bad Pass by MACKLIN,DANYELL	4 0:05				
	4 9	Foul on STANDARD, D.	4 0:05				
			4 0:05	62-65*	MILLS, CAMERON , 1 & Bonus made both	2-3	66.6% 5-8 62.5%
			4 0:05				
		REB: 43 A: 13 BLK: 3 TO: 16 PF: 9					
		S: 12 FT: 12-17 70.5% FG: 23-68 33.8%					
		T I M E - O U T PAUL DUNBAR No. 4					
			4 0:01				
5-16	31.2% 23-69 33.3%	3 pt Shot by MACKLIN,DANYELL, missed	4 0:00		Rebound by TRAVIS, LUMIE	D-1	Tot-1 D-3 Tot-37

SECOND HALF SHOT CHART Produced by the KHSAA Sweet Sixteen Stat Crew with FINAL III - a Product of LEXICON SPORTS\*



PLEASURE RIDGE PARK

Player	Player	Player
30 - MACKLIN, DA 3/ 7 42.8%	25 - WELLS, STE 2/ 4 50.0%	
34 - LINVILLE, 2/ 5 40.0%	33 - ALEXANDER, 0/ 4 0.0%	
12 - STANDARD, 1/ 4 25.0%		
21 - TAYLOR, CH 1/ 5 20.0%		
24 - KELLY, RAM 2/ 7 28.5%		
Layups 1-9 Ft 10-15 Ft Over 15 Ft 3 Pointers Total		
5 / 6 4 / 18 1 / 2 1 / 10 11 / 36		
83.3% 22.2% 50.0% 10.0% 30.6%		



PAUL DUNBAR

Player	Player	Player
21 - MILLS, CAM 0/ 4 0.0%	20 - HUGUELY, T 0/ 1 0.0%	
40 - BURTON, DA 3/ 7 42.8%		
05 - BYARS, TRA 4/ 6 66.6%		
12 - STEWART, T 4/ 5 80.0%		
23 - TRAVIS, LU 2/ 3 66.6%		
Layups 1-9 Ft 10-15 Ft Over 15 Ft 3 Pointers Total		
9 / 9 1 / 6 2 / 8 0 / 1 1 / 2 13 / 26		
100.0% 16.7% 25.0% 0.0% 50.0% 50.0%		